

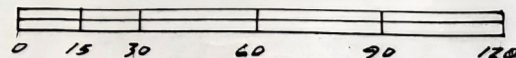
JOSEPH McDONOUGH - OWNER

VILLAGE GREEN CONDOMINIUM

SAINT SIMONS ISLAND, GLYNN CO., GA.

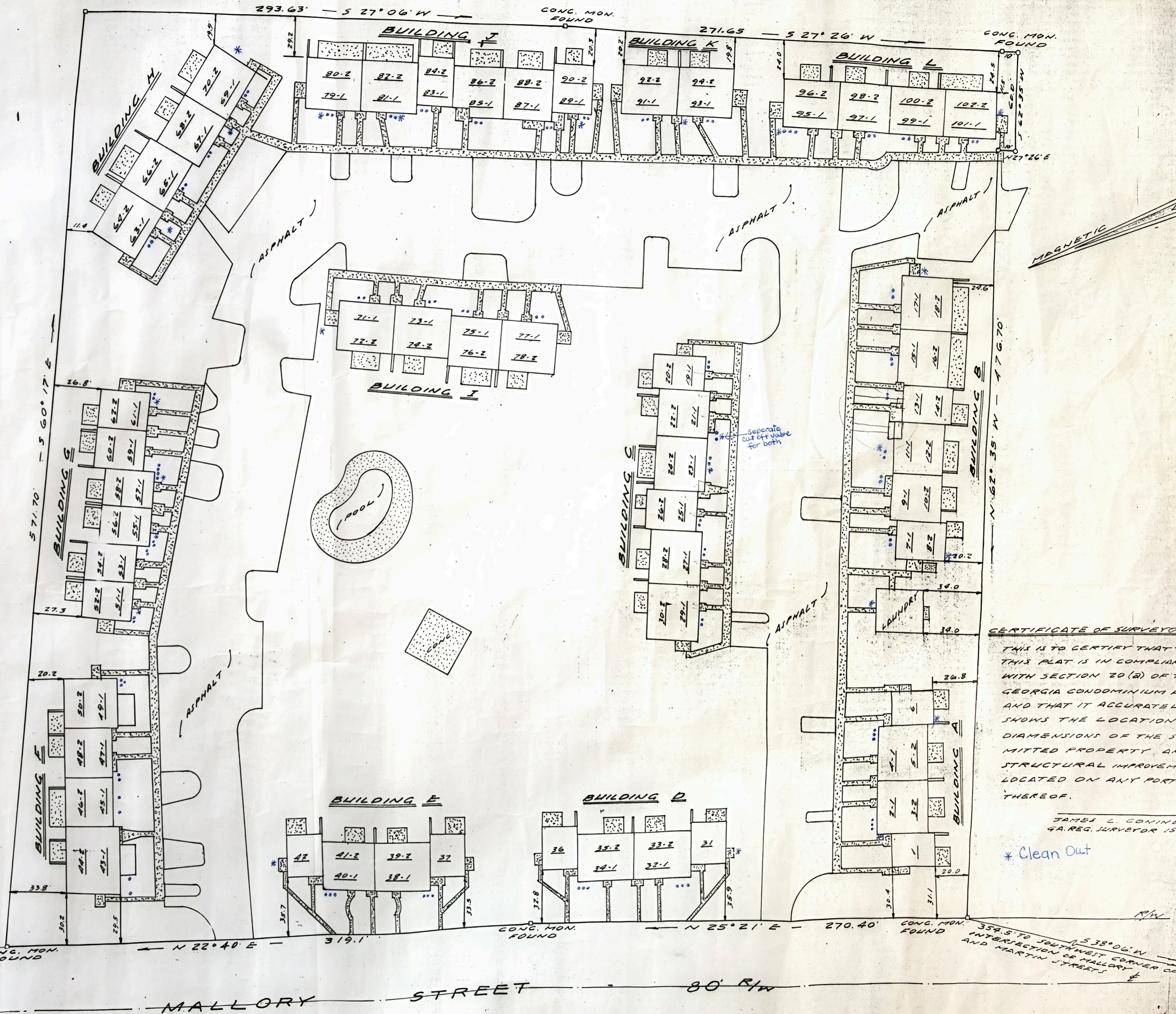
AUGUST 11, 1983

SCALE 1" = 30'



BUILDING	NUMBER	FLOOR	BEDROOM	BATH	TYPE
A	1	1ST	2	2	TOWN HOME
	2	2ND	2	2	
	3	1ST	2	2	
	4	1ST	2	2	
	5	2ND	2	2	
	6	1ST	2	2	TOWN HOME
B	7	1ST	1	1	
	8	2ND	1	1	
	9	1ST	2	1	
	10	2ND	2	1	
	11	1ST	2	1	
	12	2ND	2	1	
	13	1ST	1	1	
	14	2ND	1	1	
	15	1ST	2	2	
	16	2ND	2	2	
	17	1ST	2	2	
	18	2ND	2	2	
C	19	1ST	1	1	
	20	2ND	1	1	
	21	1ST	2	1	
	22	2ND	2	1	
	23	1ST	2	1	
	24	2ND	2	1	
	25	1ST	1	1	
	26	2ND	1	1	
	27	1ST	2	2	
	28	2ND	2	2	
29	1ST	2	2		
30	2ND	2	2		
D	31	1ST	2	2	TOWN HOME
	32	1ST	2	2	
	33	2ND	2	2	
	34	1ST	2	2	
	35	2ND	2	2	
	36	1ST	2	2	TOWN HOME
E	37	1ST	2	2	TOWN HOME
	38	1ST	2	2	
	39	2ND	2	2	
	40	1ST	2	2	
	41	2ND	2	2	
	42	1ST	2	2	TOWN HOME
F	43	1ST	3	2	
	44	2ND	3	2	
	45	1ST	2	1	
	46	2ND	2	1	
	47	1ST	2	1	
	48	2ND	2	1	
49	1ST	3	2		
50	2ND	3	2		
G	51	1ST	1	1	
	52	2ND	1	1	
	53	1ST	1	1	
	54	2ND	1	1	
	55	1ST	1	1	
	56	2ND	1	1	
	57	1ST	1	1	
	58	2ND	1	1	
	59	1ST	1	1	
	60	2ND	1	1	
	61	1ST	1	1	
	62	2ND	1	1	

BUILDING	NUMBER	FLOOR	BEDROOM	BATH	TYPE	
H	63	1ST	2	2		
	64	2ND	2	2		
	65	1ST	2	2		
	66	2ND	2	2		
	67	1ST	2	2		
	68	2ND	2	2		
	69	1ST	2	2		
	70	2ND	2	2		
	I	71	1ST	2	2	
		72	2ND	2	2	
73		1ST	2	2		
74		2ND	2	2		
75		1ST	2	2		
76		2ND	2	2		
77		1ST	2	2		
78		2ND	2	2		
J		79	1ST	2	2	
		80	2ND	2	2	
	81	1ST	2	2		
	82	2ND	2	2		
	83	1ST	1	1		
	84	2ND	1	1		
	85	1ST	2	1		
	86	2ND	2	1		
	87	1ST	2	1		
	88	2ND	2	1		
K	91	1ST	2	2		
	92	2ND	2	2		
	93	1ST	2	2		
	94	2ND	2	2		
L	95	1ST	2	2		
	96	2ND	2	2		
	97	1ST	2	2		
	98	2ND	2	2		
	99	1ST	2	2		
	100	2ND	2	2		
	101	1ST	2	2		
	102	2ND	2	2		



CERTIFICATE OF SURVEYOR

THIS IS TO CERTIFY THAT THIS PLAT IS IN COMPLIANCE WITH SECTION 20 (B) OF THE GEORGIA CONDOMINIUM ACT AND THAT IT ACCURATELY SHOWS THE LOCATION AND DIMENSIONS OF THE SUBMITTED PROPERTY AND STRUCTURAL IMPROVEMENTS LOCATED ON ANY PORTION THEREOF.

JAMES L. CONINE
GA. REG. SURVEYOR 1545

* Clean Out

354.5 TO SOUTHWEST CORNER OF INTERSECTION OF MALLORY AND MARTIN STREETS

700
700

R/W